

A BOOK OF
DESIGNS & PRICES
OF METAL WORK.



FOR CHURCH USE.



FROM WEST & COLLIER, LTD.,
6 HENRIETTA STREET,
COVENT GARDEN,
LONDON, W.C.

A Book of Designs & Prices of Metal Work.

+ + + +

FOR CHURCH USE.

+ + + +

In presenting this Catalogue we wish to state that the prices are as low as possible, compatible with best material, workmanship, and finish, which is guaranteed throughout.

Special designs and quotations submitted, upon request, of articles not shown herein.

Metal work repaired or restored at a moderate cost.

When ordering, it is sufficient to quote number and description as given herein. It is respectfully requested not to cut the pages of this book.

TERMS.—Nett Cash on delivery of goods. Carriage forward unless otherwise ordered. Packing extra for orders less than £10 value.

FROM WEST & COLLIER, Ltd.,
6 HENRIETTA STREET,
COVENT GARDEN,
LONDON, W.C.

INDEX.

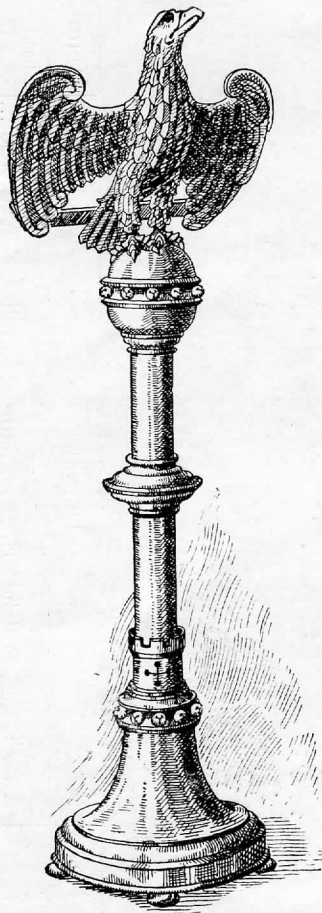


	PAGE		PAGE
Altar Crosses ...	4, 5, 6, 7, 8, 9, 10, 11	Holy Water Vats and Sprinklers ...	28, 29
Altar Crucifix ...	4, 5, 6, 7, 8, 9, 10, 11	Incense Grains ...	30, 31
Altar Ornaments, Sets of ...	4, 5, 6, 7	Lecterns ...	3
Alms Dishes ...	20, 21, 22, 23	Money and Candle Boxes ...	44, 45
„ „ Stands ...	22, 23	Missal Stands ...	16, 17, 18, 19
„ „ Bag Handles ...	22, 23	Memorial Tablets ...	48
Alms Bags ...	22, 23	Monstrance ...	42, 43
Altar Desks ...	16, 17, 18, 19	Oratory Lamps ...	36, 37, 38, 39
Altar Rails and Fittings ...	46, 47	Pulpit Desks ...	16, 17, 18, 19
Aspergois ...	28, 29	Processional Crosses ...	32, 33
Balance Weights ...	40, 41	„ Crucifix ...	32, 33
Bracket Lamps ...	40, 41	Paschal Candlesticks ...	30, 31
Benediction Crowns and Brackets ...	42, 43	Processional Lantern ...	30, 31
Benediction Lights ...	24, 25, 26, 27	Pulpit Hand-rails ...	46, 47
Banner Pole Mounts ...	30, 31	Suspending Lamps ...	40, 41
Boats and Spoons ...	28, 29	„ Links ...	40, 41
Censors ...	28, 29	„ Chain, etc. ...	40, 41
Candlesticks ...	4, 5, 6, 7, 12, 13	Sanctuary Lamps ...	36, 37, 38, 39
Candlebranches ...	24, 25, 26, 27	Standing Lamps ...	36, 37, 38, 39
Churchwardens' Wands ...	32, 33	Sacring Bells ...	28, 29
Canopy Poles ...	30, 31	Stair Rods ...	46, 47
Candleshields ...	30, 31	Tabernacles ...	42, 43
Cardframes for Pews ...	46, 47	Torchères ...	30, 31
Cloches ...	28, 29	Tape Holders ...	30, 31
Extinguishers ...	30, 31	Thuribles ...	28, 29
Exposition ...	42, 43	Umbrella Holders and Pans ...	46, 47
Font Ewers ...	34, 35	Vases ...	4, 5, 6, 7, 14, 15
„ Bucket ...	34, 35	Votive Stands ...	44, 45
„ Covers ...	46, 47		
Flower Frames ...	14, 15		
Gospel Lights ...	30, 31		
Gongs and Strikers ...	28, 29		

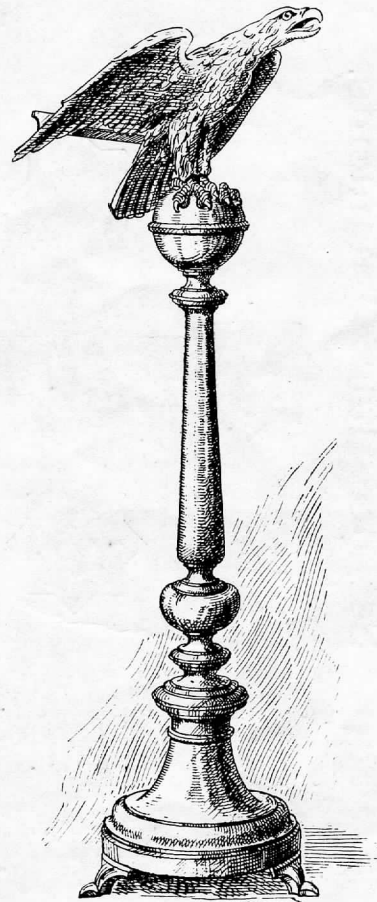
Eagle Lecterns.



No 1393.



No 1336.



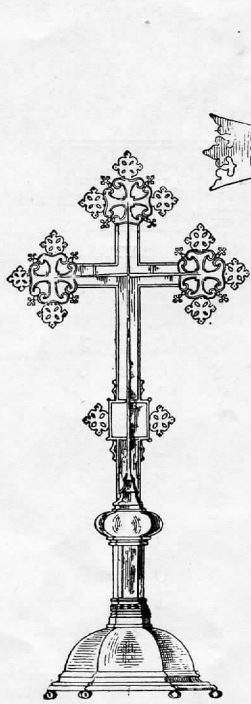
No 591.

No.	DESCRIPTION.	HEIGHT.		PRICE.		
		ft.	ins.	£	s.	d.
1393	Polished Brass, twisted stem, with mounted rosettes ...	5	6	55	0	0
1336	" " " " " " ...	5	2	25	0	0
591	" " " " " " ...	5	2	38	0	0

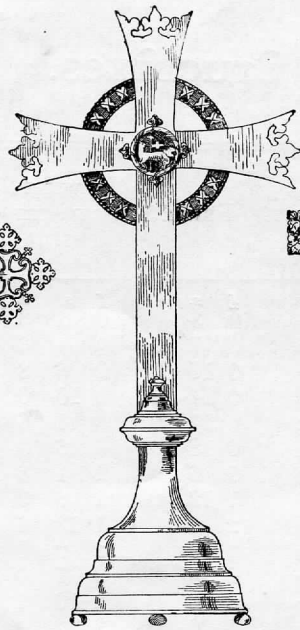
WEST & COLLIER, LTD., Church Furnishers.

Altar Crosses and Crucifixes.

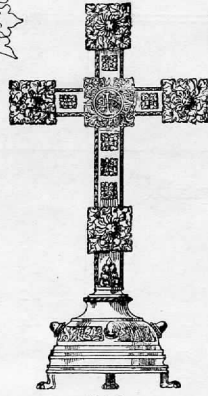
No.	DESCRIPTION.	HEIGHT.	PRICE.			IF WITH HALF STEP BASE.			FIGURE, TITLE AND MOUNTING EXTRA.		
			ins.	£	s.	d.	£	s.	d.	£	s.
645	Polished Brass, 3-step base, plain ...	4	0	3	0	0	2	3	0	2	0
"	" " " " ...	6	0	7	0	0	4	6	0	2	3
"	" " " " ...	8	0	10	0	0	6	3	0	2	6
"	" " " " ...	10	0	14	0	0	10	0	0	4	0
"	" " " " ...	12	0	15	0	0	11	6	0	5	0
"	" " " " ...	14	0	18	9	0	16	9	0	6	6
"	" " " " ...	16	1	6	9	1	1	6	0	8	0
"	" " " " ...	18	1	12	0	1	6	9	0	10	0
"	" " " " ...	20	2	0	0	1	13	6	0	11	6
"	" " " " ...	22	2	10	0	2	2	0	0	14	0
"	" " " " ...	24	2	15	0	2	7	0	0	15	6
"	" " " " ...	27	3	6	9	2	16	9	1	2	6
"	" " " " ...	30	4	0	0	3	3	0	1	10	0
"	" " " " ...	36	5	6	6	4	6	6	2	10	0
1452	" " " " ...	20 $\frac{1}{2}$	2	5	0
1456	Polished Brass base, oak cross with brass edging	20	5	10	0	0	16	0
1453	" fleur-de-lys ends	20	1	13	0
"	" " " "	25	2	5	0
1366	" trefoil ends	5 $\frac{1}{2}$	0	4	0	0	2	0
"	" " " "	9 $\frac{1}{2}$	0	8	9	0	2	0
"	" " " "	10 $\frac{1}{2}$	0	9	6	0	3	0
"	" " " "	12	0	10	3	0	4	3
"	" " " "	15	0	13	6	0	5	0
"	" " " "	19	1	2	0	0	5	6
"	" " " "	25	1	15	0	0	10	0
1454	" 3-step base, hammered cross with rosettes and 5 stones	20	3	10	0
"	" " " " ...	24	4	10	0
"	" " " " ...	30	6	0	0
660	" modelled ivy ends to cross and studded ring	25	4	4	0
"	" " " " ...	32	7	5	0
589	" Celtic pattern in relie	23	4	15	6
573	" pierced ends	20 $\frac{1}{2}$	2	7	6
"	" " " " ...	28	4	15	6
1455	" 5 rosettes and jewels...	24	3	0	0



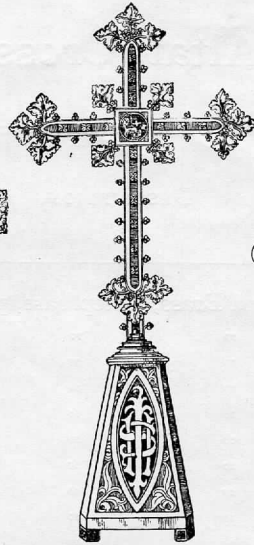
572



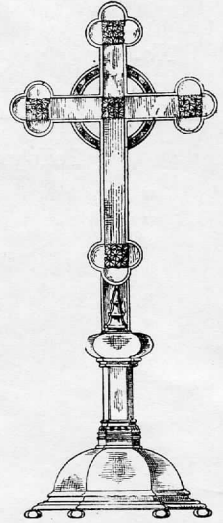
358



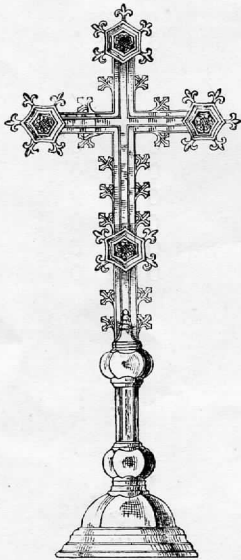
1448



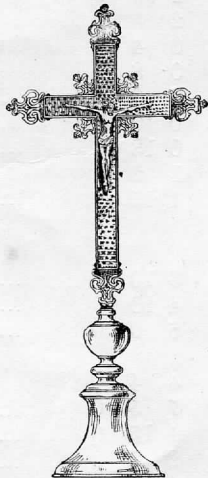
1449



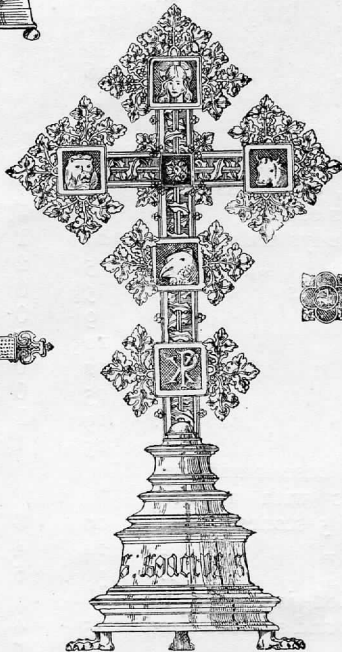
1450



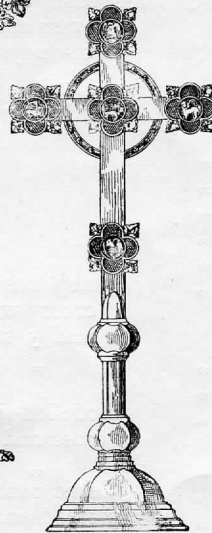
563



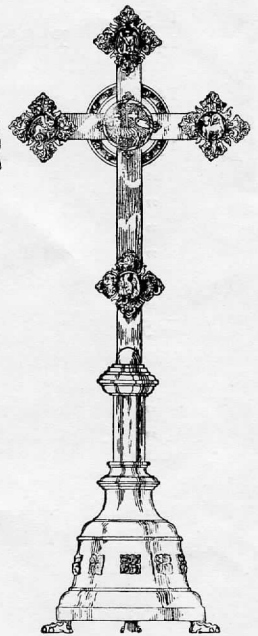
347



1451



557

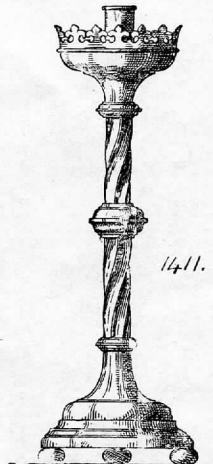
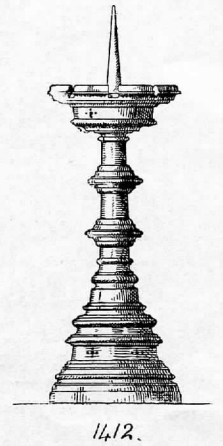
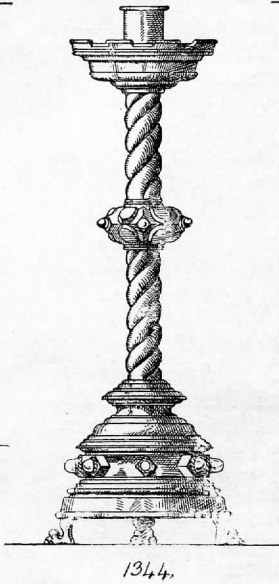
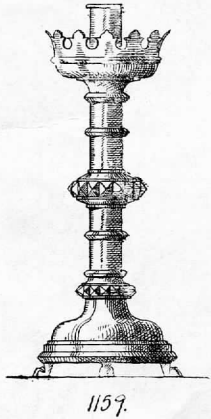
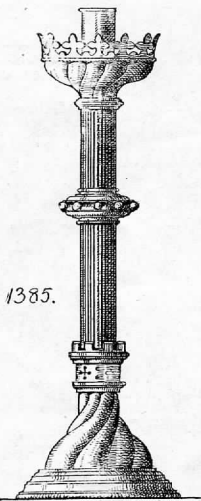
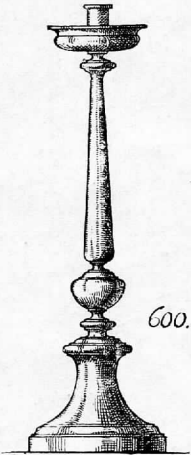
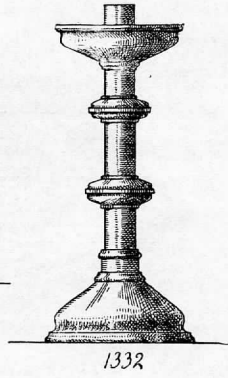
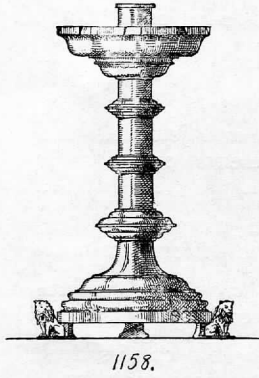
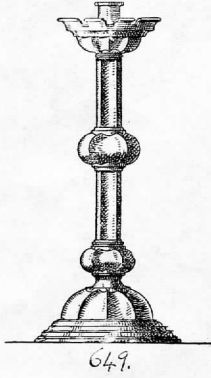
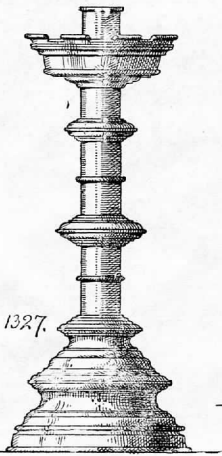
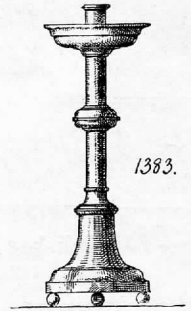
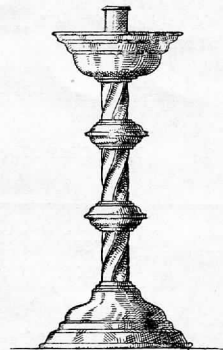
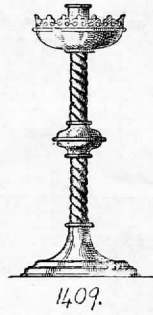
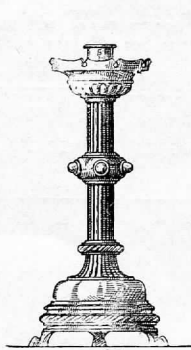
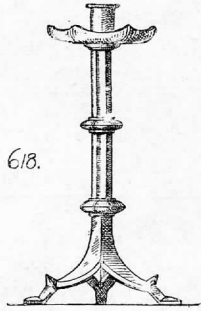


1224

WEST & COLLIER, LTD., Church Furnishers.

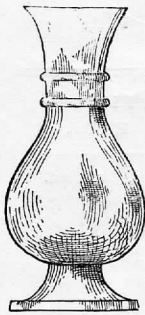
Altar Crosses and Crucifixes.

No.	DESCRIPTION.	HEIGHT.	PRICE.					
		Inches.	£	s.	d.	£	s.	d.
572	Polished Brass, pierced ends, 6-shaped hollow-fluted base and stem ...	31	8	0	0
858	„ pierced Fleur-de-lys ends ...	30	4	4	0	4	19	6
„	„ „ „ „ ...	36	6	4	6	7	10	0
„	„ „ „ „ ...	50	12	6	6	13	6	6
1448	„ richly chased and jewelled base, and ornaments on cross in relief ...	21	8	0	0
1449	„ 3-shaped base pierced and engraved vine-pattern cross ...	31	12	0	0
1450	„ trefoil ended cross on 6-shaped hollow-fluted base and stem...	31	9	0	0
563	„ cross with crockets on 6-shaped hollow-fluted base and stem...	32	6	6	0
598	„ as No. 563, but with extra heavy moulded base, knob jewelled with 6 crystals ... <i>Design on application.</i>	34	15	0	0
647	„ carved ends, and centre of cross hammered to reflect light ...	8 $\frac{1}{4}$	0	10	0	...	Figure and title and mounting on cross. From	2/-
„	„ „ „ „ ...	12	1	0	0	...	„	5/-
„	„ „ „ „ ...	20 $\frac{1}{2}$	2	15	0	...	„	7/6
„	„ „ „ „ ...	27	4	15	0	...	„	14/-
„	„ „ „ „ ...	57	23	0	0	...	„	60/-
1451	„ richly moulded, vine pattern cross, with four Evangelists and Agnus Dei, or large cut crystal in centre ...	38	28	0	0
557	„ emblems of Evangelists and Agnus Dei, with studded ring and 6-shaped hollow fluted base and stem ...	30	4	5	0
1224	„ emblems of Evangelists and Agnus Dei, with studded ring and enriched base ...	36	10	7	6

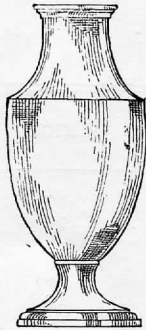


Altar Candlesticks.

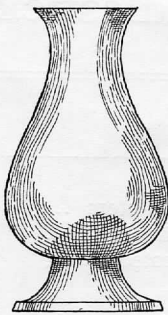
No.	DESCRIPTION.	HEIGHT.	PRICE OF EACH.			
			ins.	£	s.	d.
618	Polished Brass, 3-way base and fluted stem	13	1	7	6
1460	" reeded stem and 4 stones	14	3	3	0
1409	" twisted stem and crested pan...	...	8	0	6	6
"	" " " "	10	0	9	0
"	" " " "	12	0	11	0
"	" " " "	14	0	13	6
"	" " " "	16	0	16	0
148	" hollow twisted stem	15	1	1	0
"	" " " "	18	1	10	0
1383	" " " "	10	0	16	0
"	" " " "	16	1	4	0
"	" " " "	20	1	12	0
1327	" designed by Pugin, extra heavy & richly moulded	...	15	1	13	0
"	" " " " " "	18	2	5	0
"	" " " " " "	21	2	17	6
"	" " " " " "	24	3	6	6
"	" as above, but of lighter make	15	1	0	0
"	" " " " " "	18	1	7	6
"	" " " " " "	21	1	11	6
"	" " " " " "	24	2	5	0
649	" 6-shaped, hollow fluted throughout	13½	1	13	6
"	" " " " " "	18	2	0	0
1158	" heavily moulded, with 3 lion feet	15	4	12	6
1332	" " " " " "	15	1	2	6
"	" " " " " "	18	1	6	6
600	" " " " " "	8½	0	9	0
"	" " " " " "	15½	1	2	6
"	" " " " " "	20	1	16	6
1385	" fluted stem, pan, and base	16	2	12	6
"	" " " " " "	20	3	12	6
"	" " " " " "	24	4	12	6
1159	" heavily moulded	15	3	0	0
1344	" twisted stem and 3-claw feet,	16	2	2	0
"	" " " " " "	20	3	0	0
"	" " " " " "	24	4	0	0
"	" " " " " "	28	5	12	0
1412	" heavily moulded	15	3	15	0
1411	" hollow twisted stem and crested pan	12	0	18	9
"	" " " " " "	18	1	16	0
"	" " " " " "	22	2	2	0



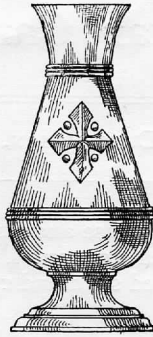
1345.



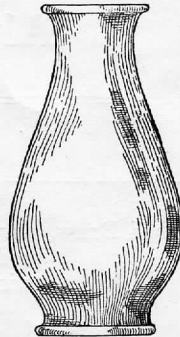
534.



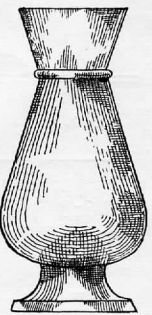
1432.



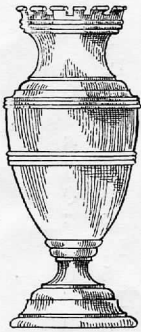
1435.



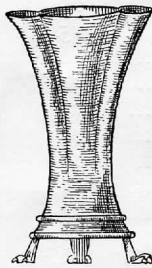
1437.



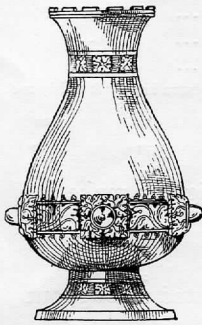
1043.



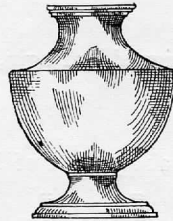
633



1119.



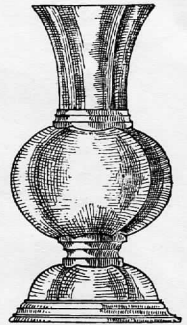
1458.



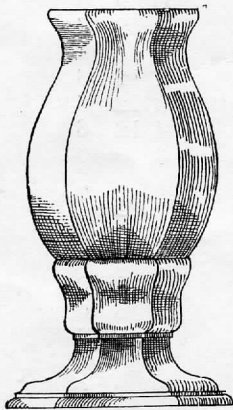
956.



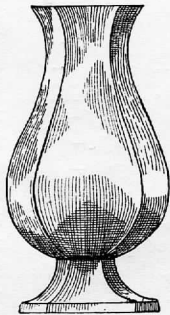
1459.



634.



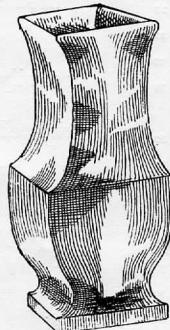
544.



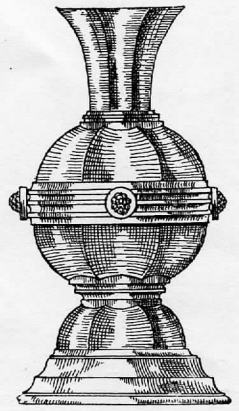
1433.



548.

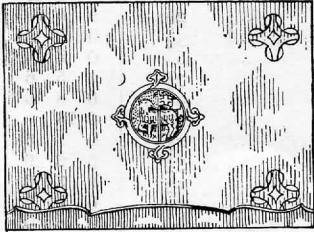


1434.

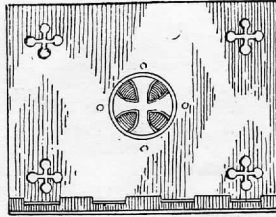


1216.

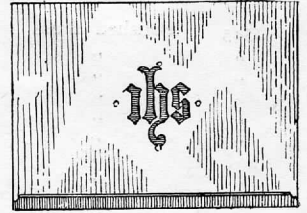
Shewing Tops of Altar
& Pulpit Desks. - (pierced & engraved.)



N° 1363.

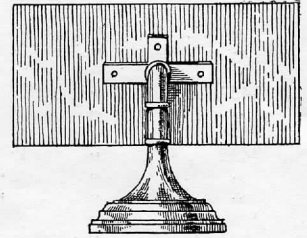
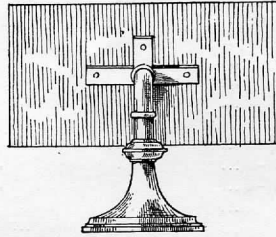
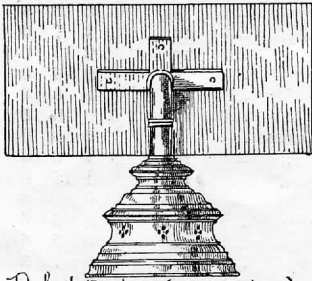


N° 1437.

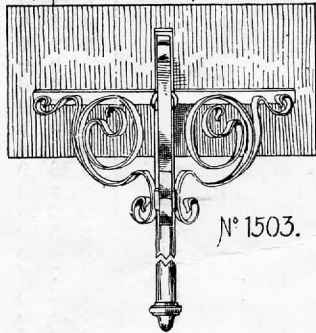


N° 1365.

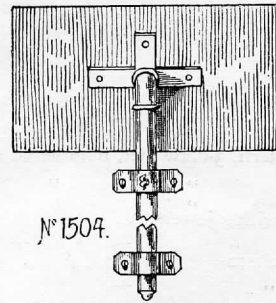
Front Elevation Altar Desks.



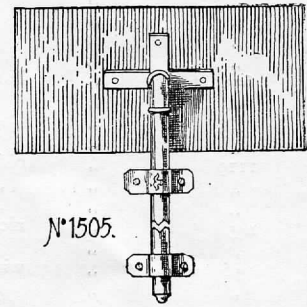
Pulpit Desks (tops as above)



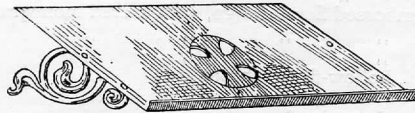
N° 1503.



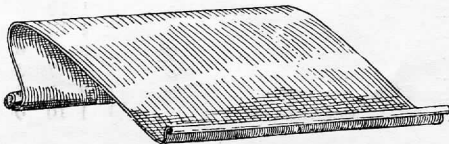
N° 1504.



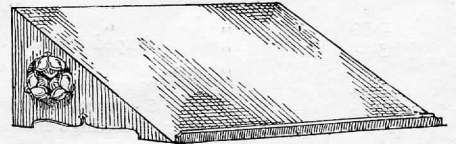
N° 1505.



N° 1364.

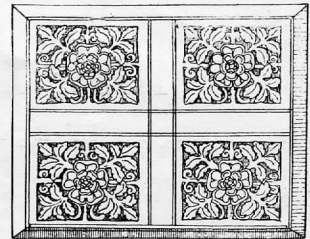
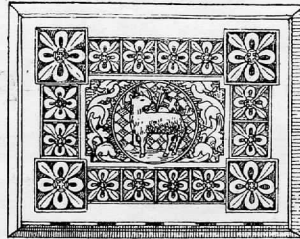
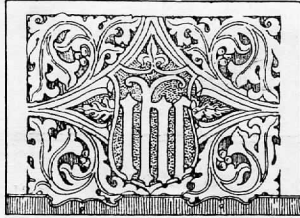


N° 1506.

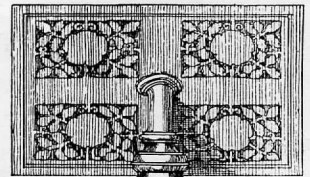
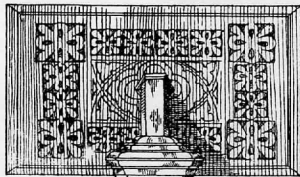
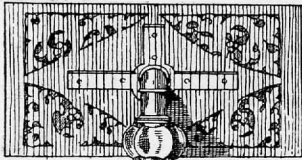


N° 1507.

detail of tops



front view

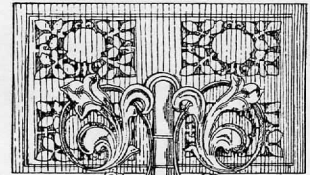
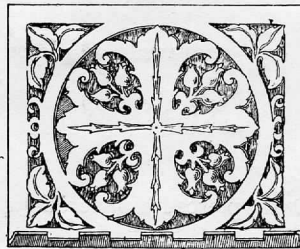
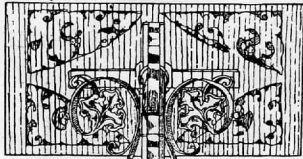


Nº 1362

Nº 1553.

Nº 1554.

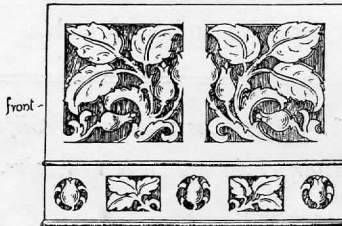
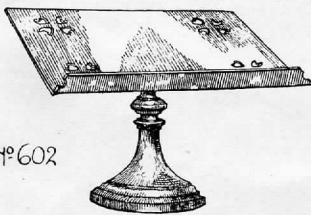
shewings as pulpit desks



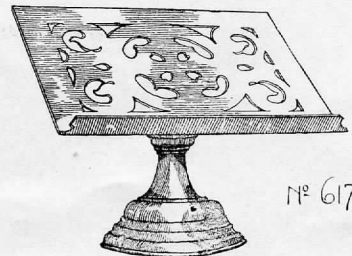
Nº 1555.

top

Nº 1556



front



Nº 602

perspective

Nº 1557

Nº 617.

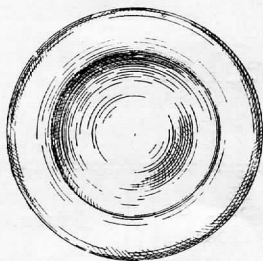
WEST & COLLIER, LTD., Church Furnishers.

Altar Desks and Pulpit Desks.

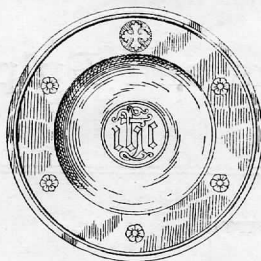
No.	DESCRIPTION.	SIZE OF BOARD.	PRICE.		
		Inches.	£	s.	d.
1362	Polished Brass, hollow-fluted base and plain top ...	14 X 10	2	3	6
"	" " " " engraved } and pierced top as illustrated }	"	3	15	0
1553	" engraved and pierced top and base ...	"	8	8	0
1554	" engraved and pierced top ...	"	5	15	0
1555	" scroll supports, plain top ...	"	2	18	6
"	" " engraved and pierced top	"	4	10	0
1556	" " " "	"	6	6	0
1557	" richly engraved and pierced on all sides	"	5	17	6
602	" plain top ...	12 X 9	1	13	6
"	" pierced top, as shown ...	12 X 9	1	18	6
"	" plain top ...	14 X 10	2	2	0
"	" pierced top, as shown ...	14 X 10	2	10	0
617	" plain top ...	12 X 9	2	2	0
"	" pierced top, as shown ...	12 X 9	2	12	6
"	" plain top ...	15 X 10½	2	15	0
"	" pierced top, as shown ...	15 X 10½	3	10	0

N.B.—Prices for Pulpit Desks include 2 Clips and Screws.

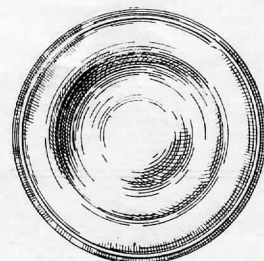
Altar Desks are made to revolve.



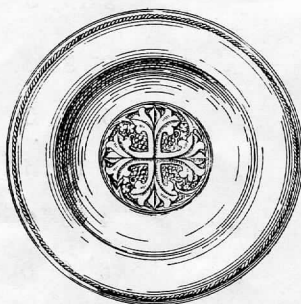
O.C. 1350.



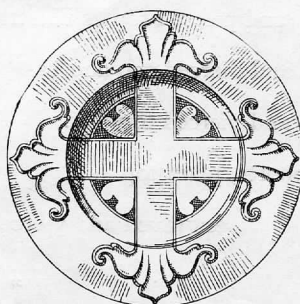
N° 1508.



N° 1509.



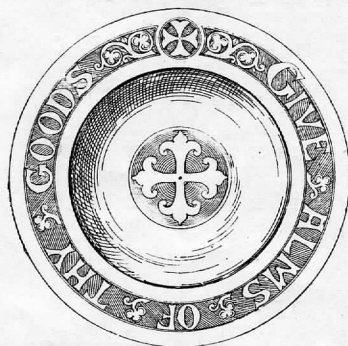
N° 1510.



N° 1511.



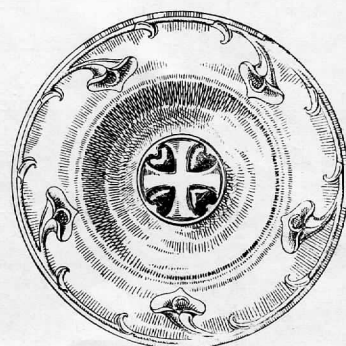
N° 1512.



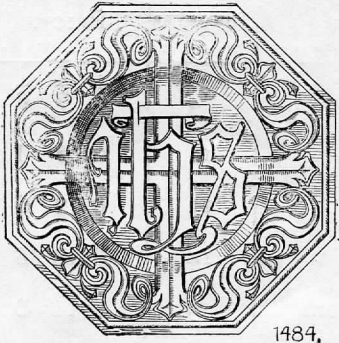
N° 1513.



N° 1514.



N° 1515.



1484.



1488.



1485.



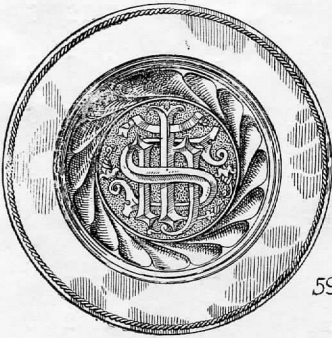
1490.



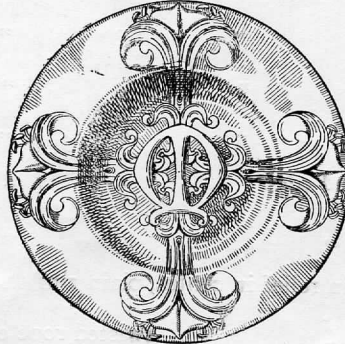
1489.



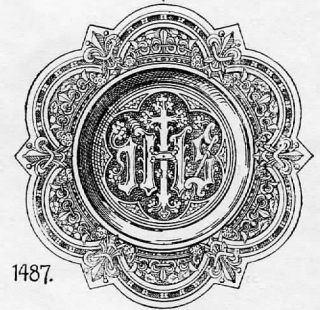
1491.



593.



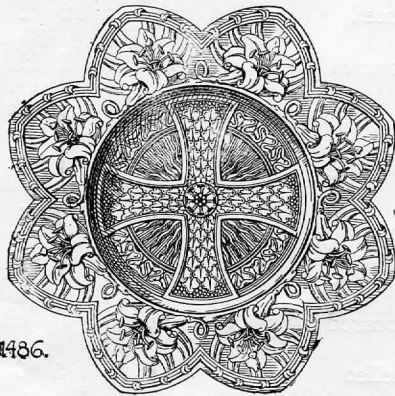
1331.



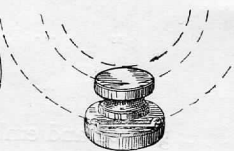
1487.



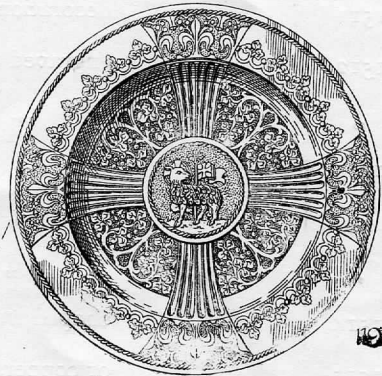
1492.



1486.



1493.



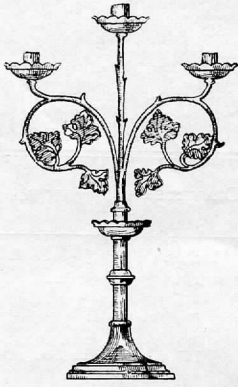
1488.

WEST & COLLIER, LTD., Church Furnishers.

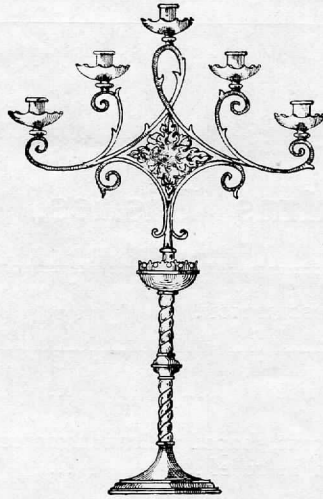
Alms Dishes.

No.	DESCRIPTION.	DIAMETER		PRICE.		
		Inches.		£	s.	d.
1484	Polished Brass, hand repoussé	16		6	15	0
1488	„ engraved text, shaped well with sacred monogram in relief	12		1	13	6
„	„ „ „ „ „ ..	14		2	5	0
„	„ „ „ „ „ ..	16		3	10	0
1485	„ richly hand embossed	18		10	0	0
593	„ fluted well with sacred monogram in relief and twisted rope edging	15		3	9	6
„	„ „ „ „ „ ..	20		7	10	0
1331	„ or copper, hand-beaten design	18		7	7	0
1487	„ richly hand embossed	15		6	10	6
1486	„ „ „ „ ..	20		15	0	0
1198	„ „ „ and twisted rope edging	18		7	7	0
1492	Oak Alms Dish Stand		0	6	6
1493	„ „ „		0	2	6
1489	Polished Brass Alms Bag Handle		0	5	0
1490	„ „ „ „		0	6	6
1491	„ „ „ „		0	5	0

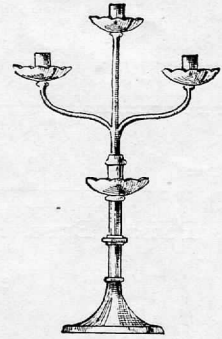
*Plain Alms Bags for above, Cloth Lined Silk, 3/-; Ribbed Silk, 4/6;
Silk Embroidered Cross on same, from 3/6 extra.*



1575



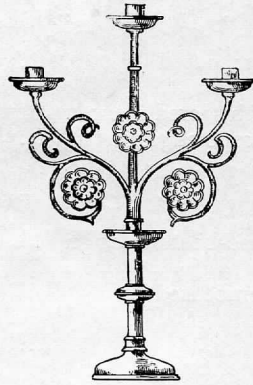
1576



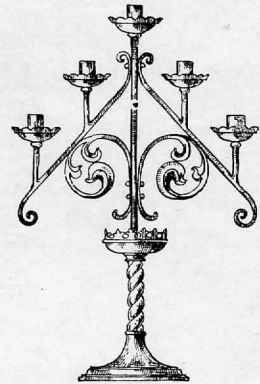
1577



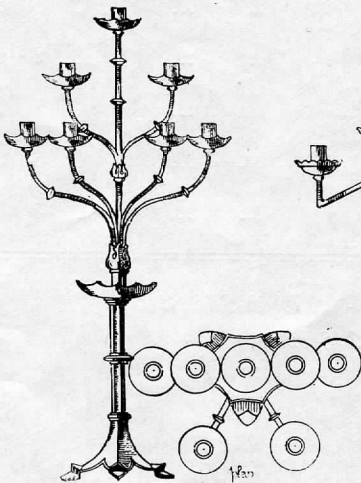
1578.



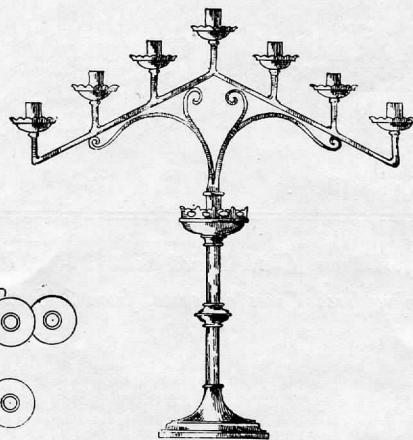
1579



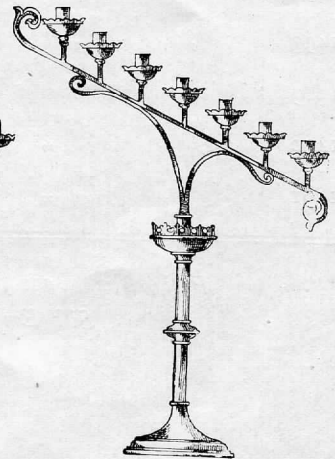
1580.



1581



1582

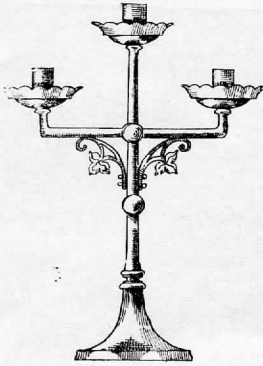


1583

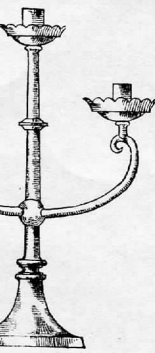
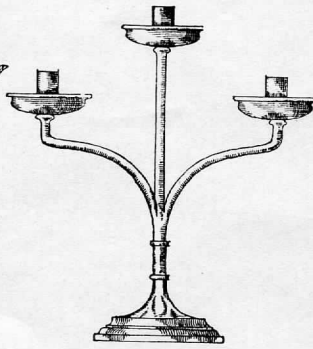
WEST & COLLIER, LTD., Church Furnishers.

Branch Candlesticks.

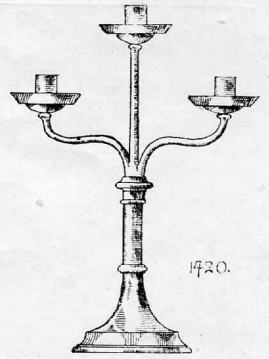
No.	DESCRIPTION.	No. OF LIGHTS.	HEIGHT.	PRICE.		
				Inches.	£	s.
1575	Polished Brass	3	15	1	7	6
1576	„ twisted stem	5	24	2	7	6
1577	„	3	10	0	7	6
1578	„ emblem of “Agnus Dei” ...	3	12	1	10	0
1579	„ with rosettes	3	15	1	5	0
1580	„	5	18	1	16	0
1581	„ 3-way base	7	33	2	17	6
1582	„	7	14	1	5	0
1583	„	7	15	1	5	0



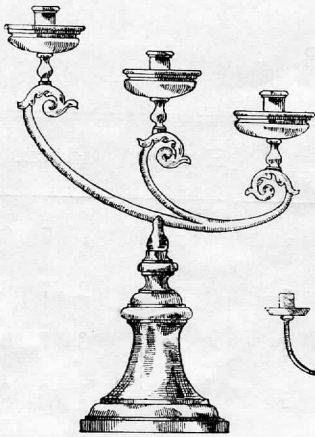
1422.



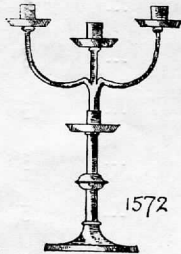
1420.



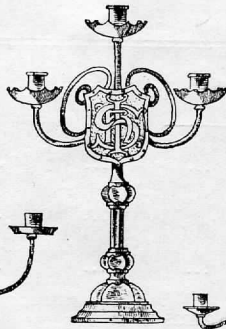
1419.



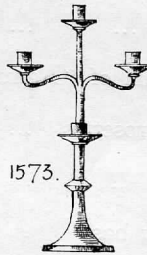
1283.



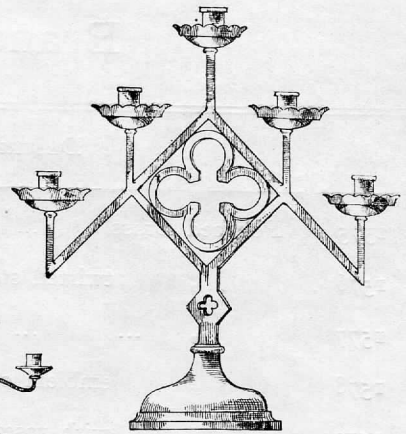
1572



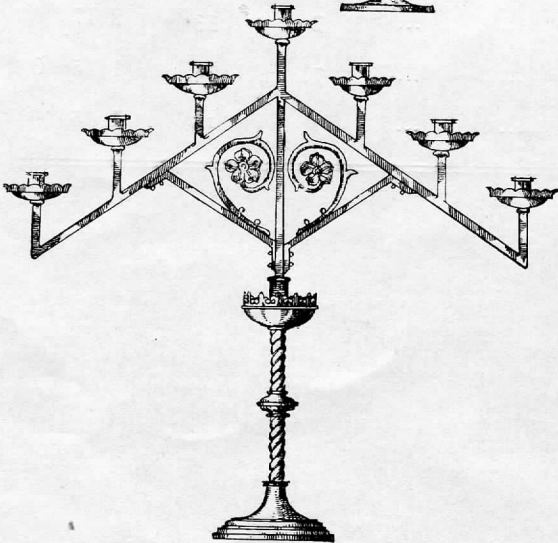
1571



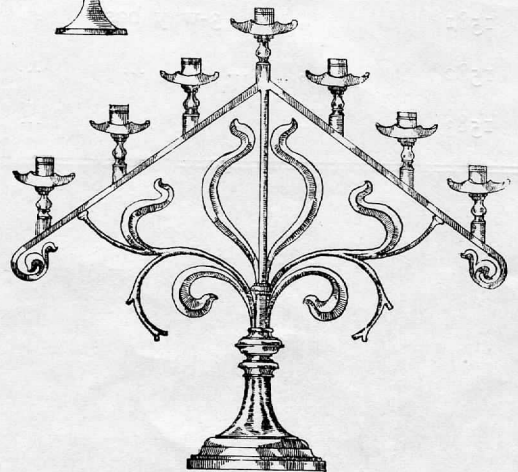
1573.



1423.



1574.

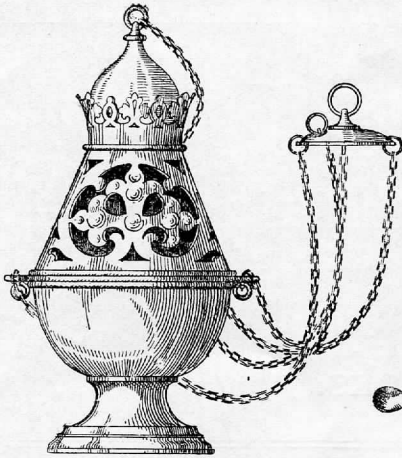


816.

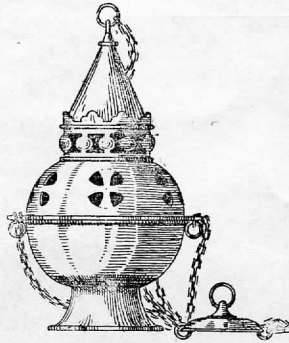
WEST & COLLIER, LTD., Church Furnishers.

Branch Candlesticks.

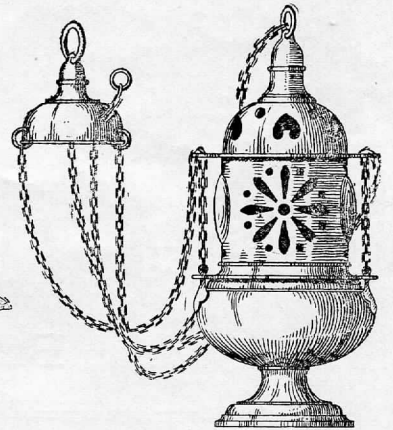
No.	DESCRIPTION	No. OF LIGHTS.	HEIGHT.	PRICE.		
				Inches.	£	s.
1584	Polished Brass	3	10½	1	0	0
1422	„	3	10	0	14	0
1419	„	3	11	0	16	0
1420	„	3	10	0	12	6
1283	„	3	13	1	13	0
1571	„ hollow-fluted base and stem ...	3	16	3	3	0
1423	„	5	12½	1	7	0
1572	„	3	5	0	4	6
1573	„	3	5	0	3	3
1574	„	7	12½	1	15	0
„	„	7	24	2	2	0
816	„	7	19	3	12	6



Nº 1632.



Nº 1633



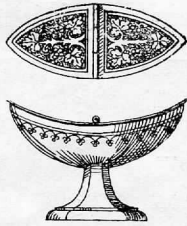
Nº 508.



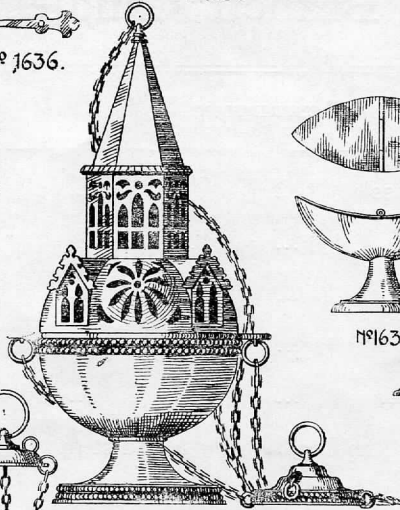
Nº 1636.



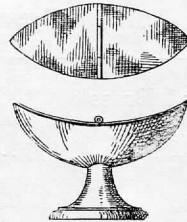
Nº 1634.



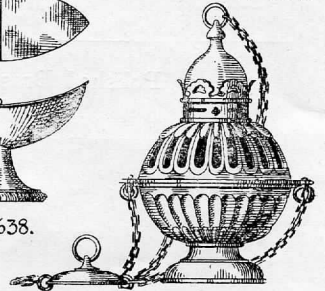
Nº 1637



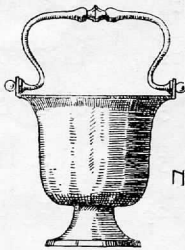
Nº 509



Nº 1638.



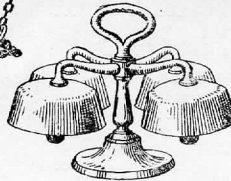
Nº 1635.



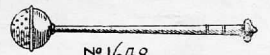
Nº 1675



Nº 1639.



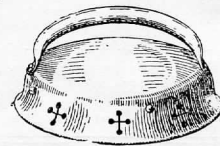
Nº 1640



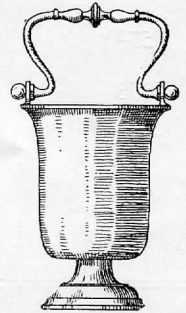
Nº 1648



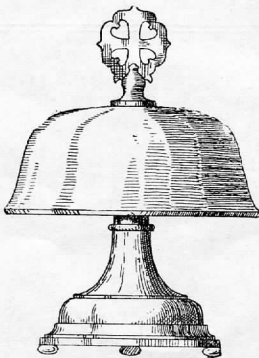
Nº 1641



Nº 1642



Nº 1646.



Nº 1647.

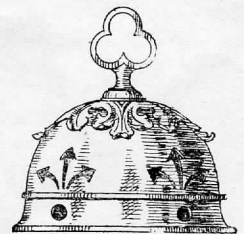
Nº 1647



Nº 1650



Nº 1649

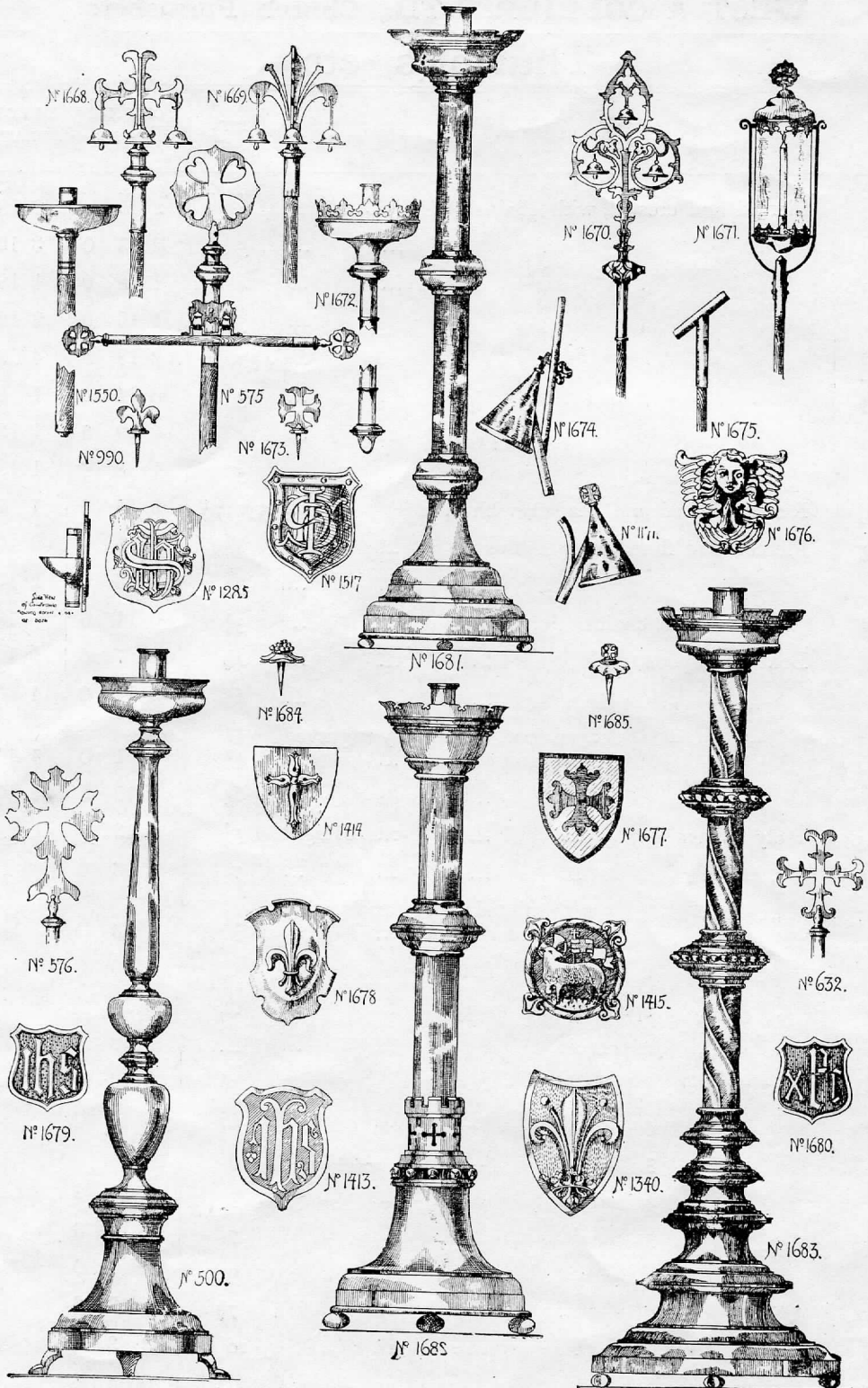


Nº 1643

WEST & COLLIER, LTD., Church Furnishers.

Thuribles, etc.

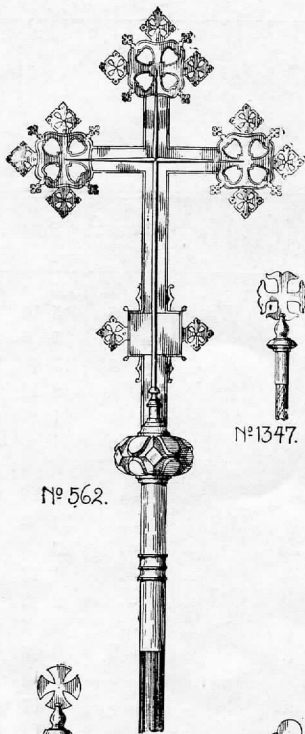
No.	DESCRIPTION.	SIZE.	POLISHED BRASS.			ELECTRO-PLATED.			
			£	s.	d.	£	s.	d.	
1632	Pierced and crested, with chains	Diameter	Inches.	£	s.	d.	£	s.	d.
			4	2	5	0	2	18	6
"	" " "	...	5	2	15	0	3	12	0
1633	" " "	...	4	1	10	0	1	18	6
"	" " "	...	5	1	16	0	2	12	0
508	" " "	...	4½ x 10	2	18	6	4	2	6
1634	" " "	...	3	0	14	6	1	6	6
"	" " "	...	4	0	19	6	1	13	6
"	" " "	...	5	1	3	6	1	19	6
509	Richly pierced and beaded, with chains	...	5 x 12½	5	15	0	7	7	0
1635	Pierced and fluted, with chains	...	4	1	5	0	2	0	0
"	" " "	...	5	1	15	0	2	13	6
1639	" with chains	...	3¼	0	11	6	0	19	0
1638	Boat and spoon, plain	...	4½	0	7	6	0	15	0
"	" " "	...	6½	0	11	0	1	0	0
1637	" " shaped-foot, bowl richly engraved sides and top	...	4½	1	1	0	1	10	0
"	" " "	...	6½	1	10	0	2	0	0
1695	Holy Water Vat	...	Height	5¼	0	13	0
1646	" " "	...	7	0	16	0
1647	" " " with fluted base and richly chased ornament...	...	10½ to top of handle	3	3	0
"	" " " plain, with fluted base	...	"	1	10	0
1648	" " sprinkler for sponge	0	6	6
1649	" " aspergois	0	8	0
1641	Sacring Bell, 3 bell	5½	0	16	0
1640	" 4 " "	6¼	1	13	0
1648	" 3 " "	...	Diameter	7	1	1	0
"	" 4 " "	...	"	9	1	11	6
1643	" 3 " "	...	"	7	1	10	0
"	" 4 " "	...	"	9	2	0	0
1644	Gong	...	"	7½	1	17	6
"	"	...	"	10	3	3	0
1650	Striker, brass handle	0	5	6



WEST & COLLIER, LTD., Church Furnishers.

Paschal Candlesticks, etc.

No.	DESCRIPTION.	HEIGHT.		PRICE.		
		Ft.	In.	£	s.	d.
1681	Polished Brass Each	4	6	5	10	0
500	" " " " " " " "	4	6	11	5	0
"	" " " " " " " "	5	6	17	10	0
1682	" " " " " " " "	4	6	12	12	0
1683	" " " " " " " "	5	0	11	0	0
"	" " " " " " " "	6	0	14	0	0
1668	Canopy Poles, polished brass on oak stems, per set of 4	8	8	0
1669	" " " " " " " "	7	10	0
1670	" " " " " " " "	14	0	0
"	" " " " " " " "	20	0	0
1671	Processional Lantern, on oak pole, iron	1	13	0
"	" " " " " " " "	2	2	0
"	" " " " " " " "	3	3	0
1550	Torchère, polished brass, on oak pole	3	6	0	8	9
"	" " " " " " " "	3	6	0	10	0
"	" " " " " " " "	3	6	0	17	6
1672	" " " " " " " "	4	0	0	16	0
"	" " " " " " " "	4	0	1	5	0
575	Banner Pole mounts, complete set with oak poles	2	10	0
576	" Cross, polished brass	1	6	1	5	0
632	" " " " " " " "	1	1	0	17	6
990	" Finial, " " " " " " " "	0	3	0	1	6
1673	" " " " " " " "	0	3	0	2	0
1674	Polished Brass Extinguisher and Taper-holder, with slide	0	2	0	5	0
"	" " " " " " " "	0	2½	0	6	0
1671	" " " " " " " "	0	2	0	4	0
"	" " " " " " " "	0	2½	0	5	0
1675	" Taper-holder	0	1	6
	Oak Rods extra from 1s. 6d. each.
1684	Incense Grains, polished brass, per set of 5	0	15	0
1685	" " " " " " " "	0	10	0
1285	Candleshields, polished brass, with monogram in relief, half pan and socket at back, large size	2	7	6
1517	Candleshields, polished brass, with monogram in relief	1	1	0
1676	Candleshields, polished brass, angel's head, half pan and socket at back, large size	8	0	0
1414	Polished Brass Shield, with cross in relief	0	10	0
1678	Repoussé Copper, hand wrought	2	10	0
1413	Polished Brass, with red enamel wax ground	1	2	0
1677	" with illuminated cross	0	15	0
1415	" with " Agnus Dei " in relief	1	5	0
1340	" with Fleur-de-lys in relief	1	10	0
1679 } 1680 }	" with emblem in relief	1	1	0



N° 562.



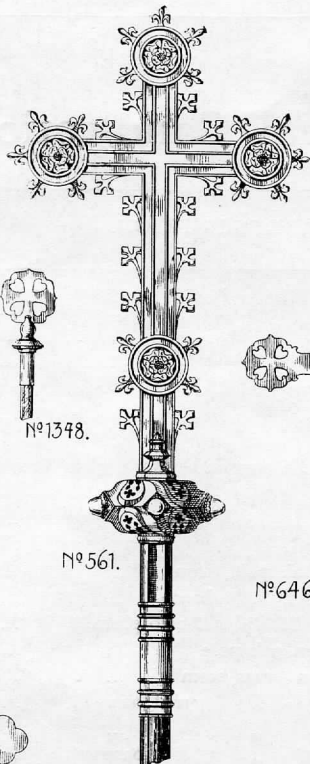
N° 1347.



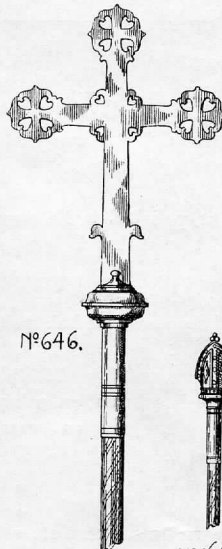
N° 1348.



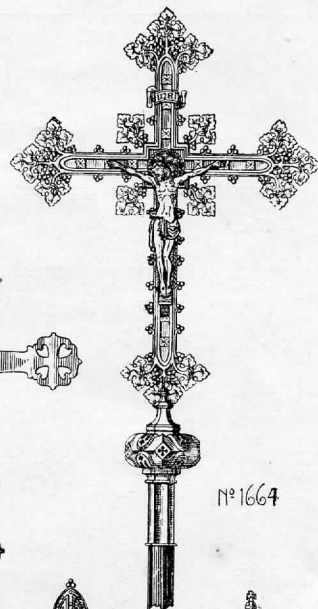
N° 1516.



N° 561.



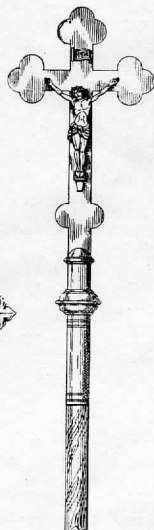
N° 646.



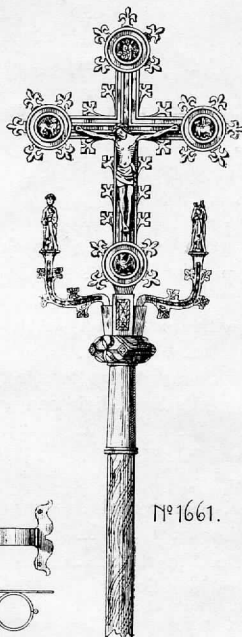
N° 1664



N° 1346.



N° 1665.



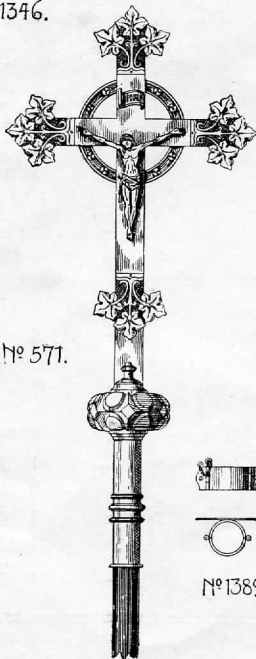
N° 1661.



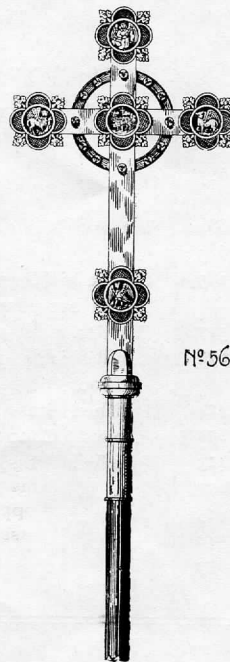
N° 1662.



N° 1663.



N° 571.



N° 560.



N° 1389.



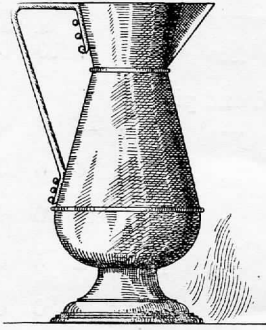
N° 666.

WEST & COLLIER, LTD., Church Furnishers.

Processional Crosses.

No.	DESCRIPTION.	PRICE.			
		£	s.	d.	
562	Richly pierced ends, polished brass	7	10	0	
561	Polished Brass, with Gothic crockets and rosettes, jewelled and pierced knop	12	0	0	
„	Smaller size, and without jewels or piercing	6	6	0	
1664	Polished Brass, richly moulded vine pattern	10	0	0	
	Figure and mounting	from	2	5	0
571	Polished Brass, ivy ends in relief	5	0	0	
	Figure and mounting	from	0	15	0
1665	Polished Brass, trefoil end	small	1	13	6
	Figure and mounting extra		0	5	0
„	Polished Brass, trefoil end	medium	2	2	0
	Figure and mounting extra... ..		0	5	6
„	Polished Brass, trefoil end	large	2	15	0
	Figure and mounting extra... ..		0	10	0
1661	Antique Bronze, with gilt figures. (Copy of old "Durham" cross) ...	9	9	0	
646	Polished Brass, pierced ends	3	0	0	
560	Polished Brass, emblems of Evangelists and Agnus Dei	4	5	0	
1347	Churchwarden's Wand, polished brass on oak stem	0	8	0	
1348	„ „ „ „	0	9	0	
1346	„ „ „ „	0	6	6	
1516	„ „ „ „	0	11	6	
1662 } OR 1663 }	„ „ „ „	0	18	0	
1662 } OR 1663 }	„ „ larger, and richly modelled and chased	2	2	0	
666	Processional Cross clips, polished brass, one hinged and one fixed	PER PAIR.	0	10	6
1389	„ „ „ „ „		0	9	0

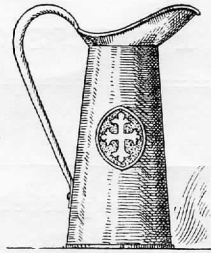
N.B.—Prices of Processional Crosses and Crucifix include oak stems and joints with polished brass sockets and brass shoes.



1377.



1594.



1595.



1370.



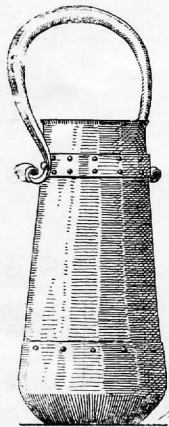
1596.



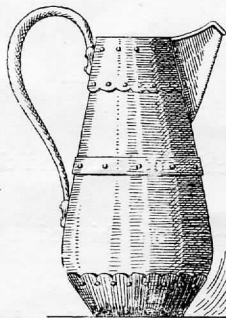
1597.



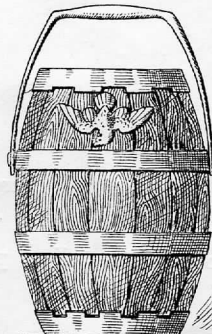
697.



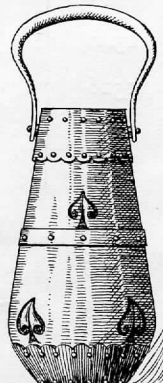
1555.



536.



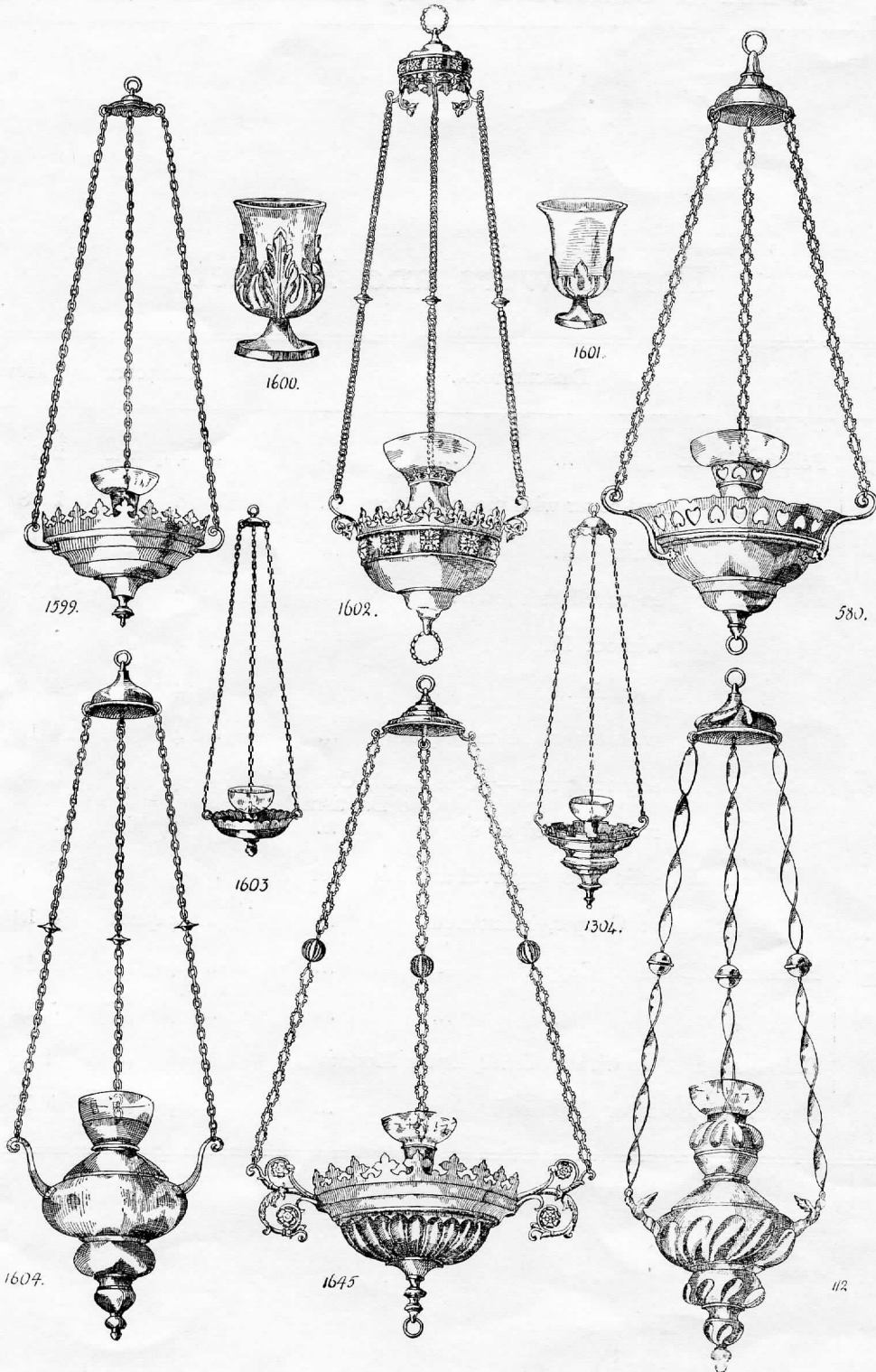
1598.



537.

Font Ewers and Bucket.

No.	DESCRIPTION.	CAPACITY	PRICE.
1377	Polished Brass	4 quarts	£ s. d. 2 13 6
1594	„ and cover with mounted cross ...	2 „	1 8 6
1595	„ plain	2 „	0 10 0
„	„ engraved as shown	2 „	0 17 6
1370	„ without lid	4 „	3 13 6
„	„ with lid	4 „	4 6 6
„	„ with embossed monogram ...	4 „	4 19 0
1596	„ engraved text—“ One Lord, One Faith, One Baptism ”	4 „	3 8 6
1597	„ richly chased as shown	24" high	17 0 0
„	„ solid base, engraved and Lion feet	...	8 0 0
697	„ or Copper, hammered	4 quarts	4 13 6
1355	Hammered Brass or Copper	4 „	3 15 0
536	„ „ „ „ „ ..	4 „	5 12 0
1598	Oak Font Bucket with Polished Brass Mounts	6 „	2 5 0
537	Hammered Brass or Copper	4 „	5 12 0

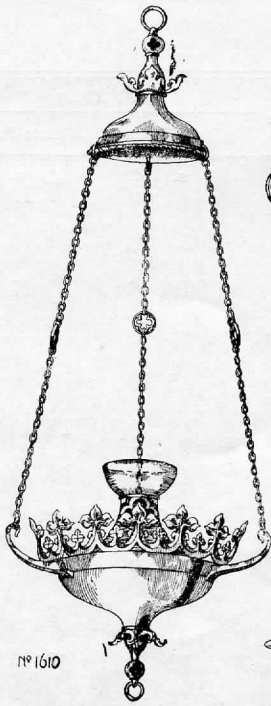


WEST & COLLIER, LTD., Church Furnishers.

Sanctuary Lamps.

No.	DESCRIPTION.	DIAMETER	PRICE.					
			Polished Brass.			Electro-Plated.		
		ins.	£	s.	d.	£	s.	d.
1599	Pierced cresting	8	1	0	0	1	12	0
"	"	10	1	15	0	2	15	0
"	"	12	2	12	6	3	17	6
1602	Hand-pierced cresting with mounted rosettes ...	9	4	10	0	6	0	0
"	" " " " " ...	12	6	15	0	9	0	0
"	" " " " " ...	14	8	15	0	11	15	0
580	Hand-pierced cresting	6	1	12	6	2	5	0
"	" "	8	2	5	0	3	0	0
"	" "	10	2	18	6	3	18	6
"	" "	12	4	5	0	6	0	0
"	" "	14	5	12	0	7	5	0
1604	Plain	7	1	17	6	3	1	6
"	"	8	2	17	6	4	7	6
1645	Fluted and crested, with enriched arms ...	8	1	16	6	3	11	6
"	" " " " " ...	10	2	12	6	3	12	6
112	Twisted links and fluted body, omitting moulding next glass	7	3	12	6	4	7	6
	Twisted links and fluted body, as shown in illustration	8	5	0	0	6	5	0
1603	Scalloped cresting	3½	0	3	6	0	8	6
"	"	4½	0	5	6	0	14	0
"	"	6½	0	18	0	1	8	0
"	"	8	1	3	0	1	15	0
"	"	10	1	12	0	2	7	6
1304	Battlemented cresting, richly moulded ..	5	1	3	6	1	15	0
1600	Standing lamp, with ruby glass ...	5 in. high	0	4	0			
"	" " " " " ...	7 "	0	6	6			
1601	" " " " " ...	3 "	0	1	9			

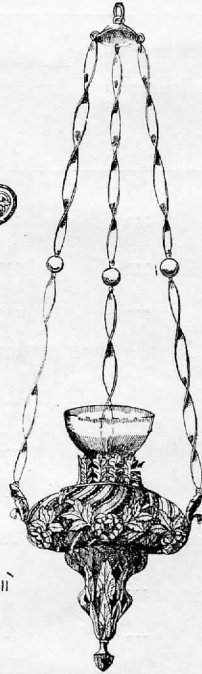
NOTE.—For Balance Weights and Suspending Chains, see page 40.
Prices include Ruby Glasses.



№ 1610



№ 1605



№ 1611



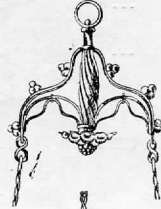
№ 1609.



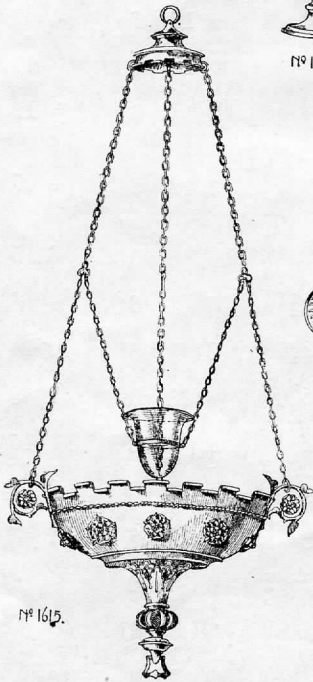
№ 1612



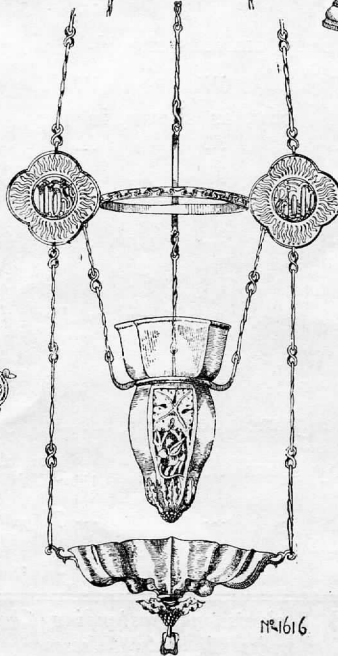
№ 1613.



№ 1614.



№ 1615.



№ 1616

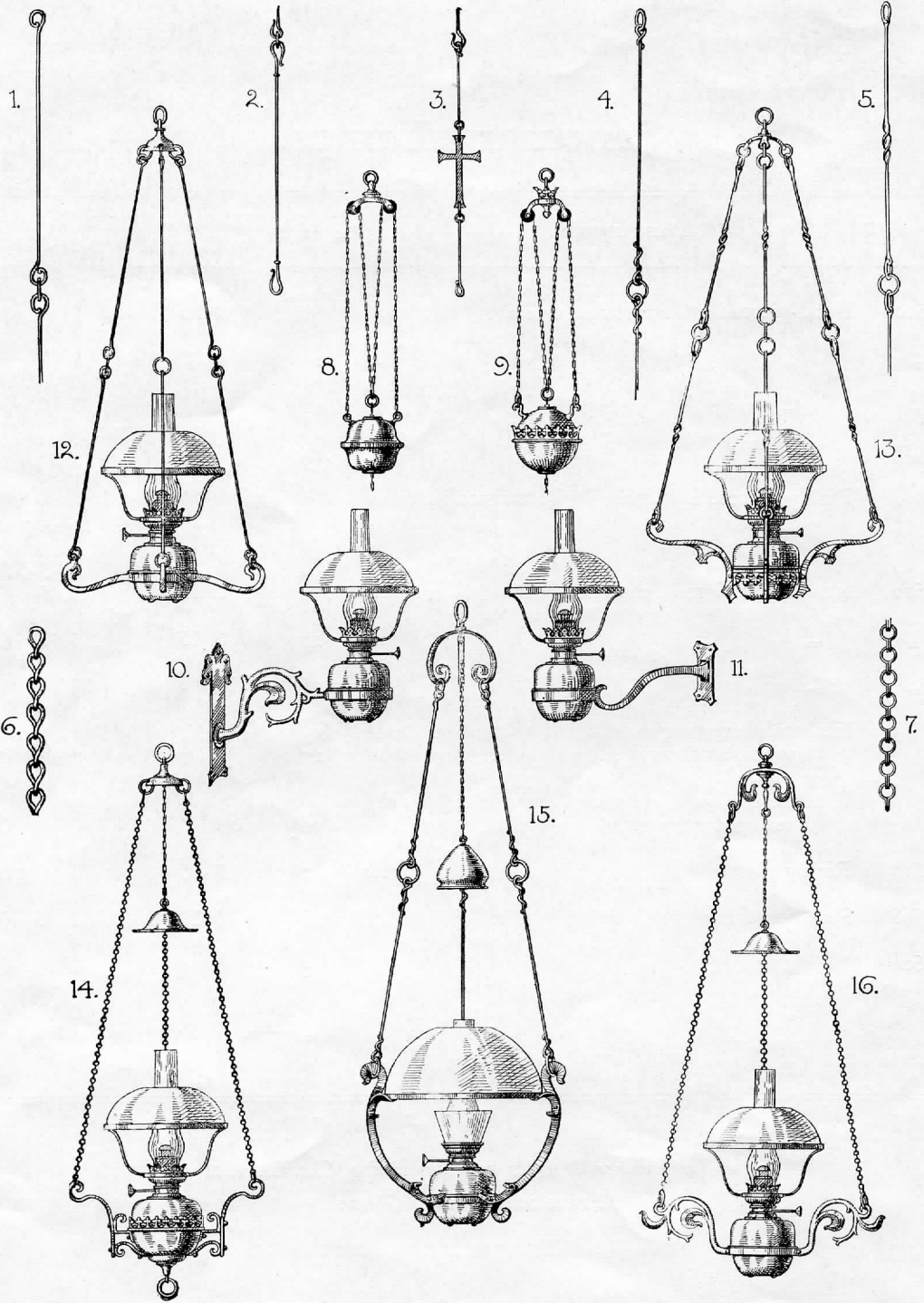


№ 1617

Sanctuary Lamps.

No.	DESCRIPTION.	DIAMETER	PRICE.						
			Polished Brass.			Electro-Plated.			
		Inches.	£	s.	d.	£	s.	d.	
1610	Hand-pierced and embossed cresting ...	8	3	10	0	4	5	0	
"	"	10	4	7	6	5	7	6	
"	"	12	5	5	0	6	10	0	
"	"	14	6	6	0	7	17	6	
1611	Richly pierced and chased with twisted links ...	7½	5	0	0	6	0	0	
						Electro-Gilt.	7	0	0
1612	Fluted and pierced, enriched arms ...	8	2	12	6	3	17	6	
"	" " "	10	3	15	0	5	5	0	
"	" " "	16	14	0	0	18	0	0	
1615	Embattled cresting, mounted roses, with repoussé work, as shown ...	12	6	6	0	8	10	0	
1616	Hammered shape, embossed and pierced panels, shaped ruby glass ...	10½	30	0	0	40	0	0	
1617	Richly pierced ...	7½	7	10	0	10	0	0	
1608	Standing lamp ...	8	0	16	0	1	5	0	
1609	" ...	5	0	4	0	0	10	0	
1613	" ...	5	0	4	0	0	10	0	
1614	" pierced band ...	4½	0	5	0	0	12	0	

NOTE.—For Balance Weights and Suspending Chains, see page 40.
Prices include Ruby Glasses.

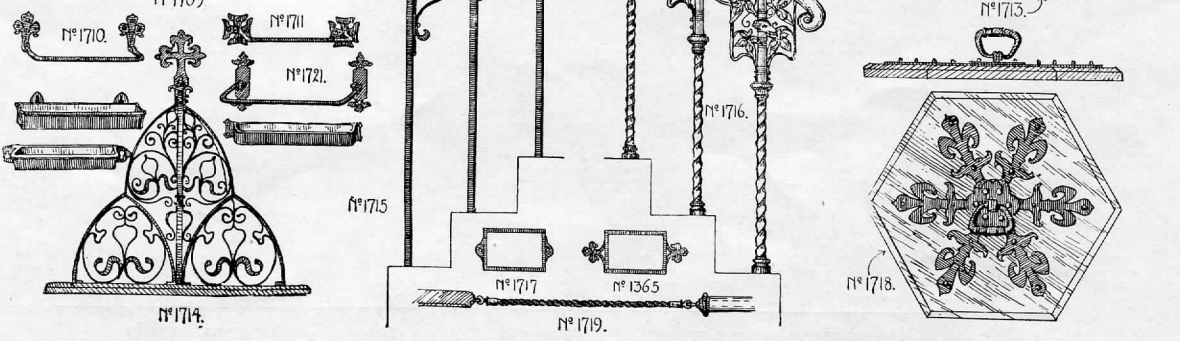
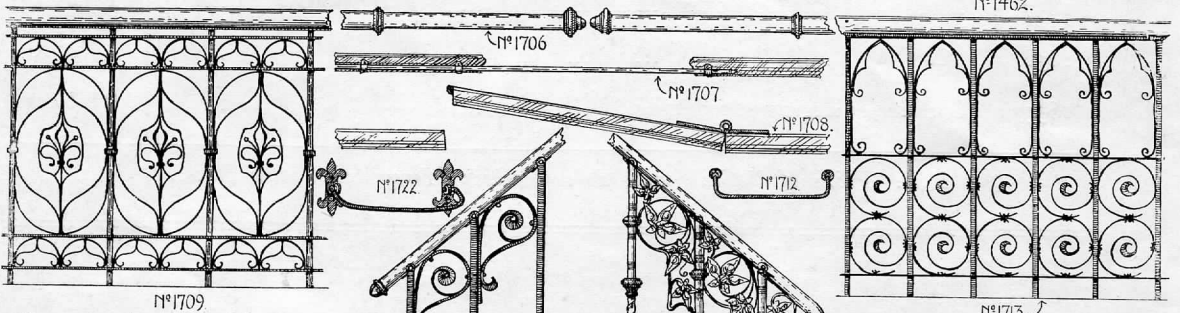
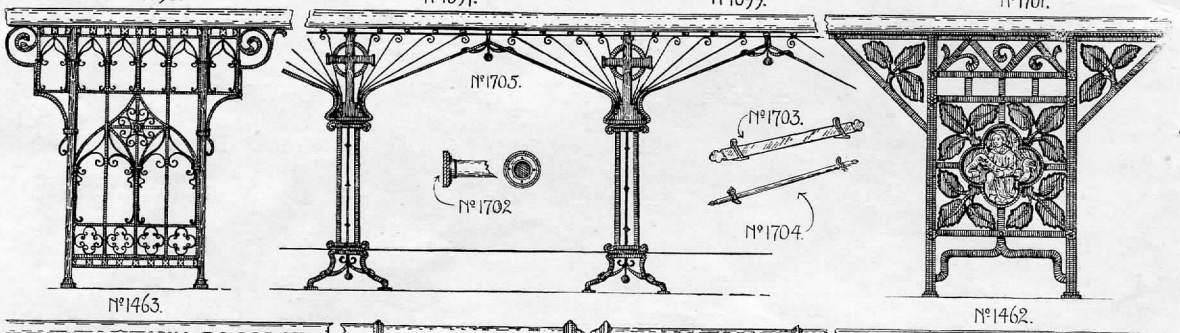
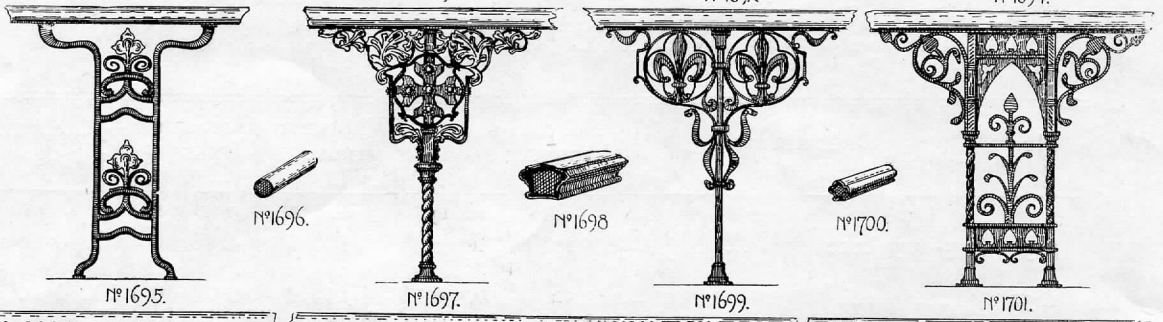
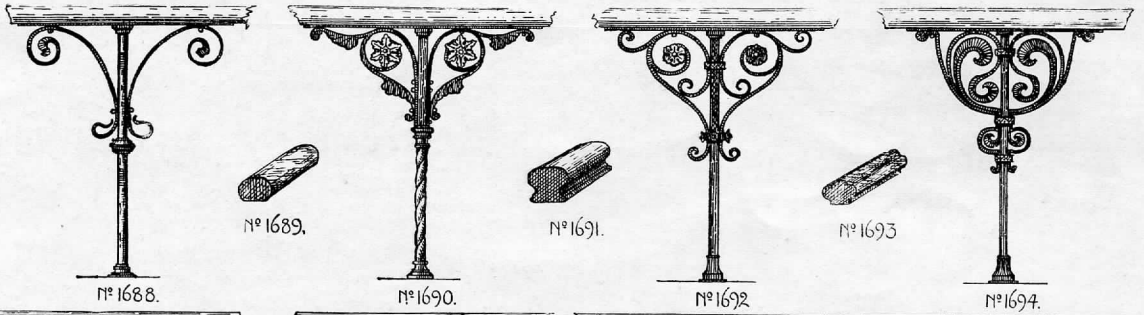


WEST & COLLIER, LTD., Church Furnishers.

Votive Stands.

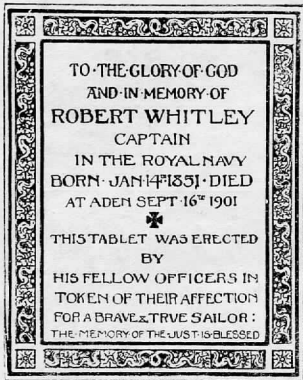
No.	DESCRIPTION.	No. OF LIGHTS.	HEIGHT.	WROUGHT IRON.			IRON AND BRASS.			ALL POLISHED BRASS.		
				£	s.	d.	£	s.	d.	£	s.	d.
1651	3-way base	17	Ft. In. 4 6	3	10	0	4	10	0	8	0	0
1652	" "	22	4 6	4	15	0	6	6	0	10	0	0
1653	" "	12	3 6	2	2	0	2	7	6	4	17	6
1654	" " vases extra ...	19	5 6	12	0	0	16	0	0	25	0	0
1655	" "	19	4 6	3	5	0	3	12	6	6	15	0
"	" "	"	5 6	4	7	6	5	0	0	10	0	0
1656	" "	33	5 6	20	0	0	25	0	0	35	0	0
1657	Money and Candle Boxes	JAPANNED. 0 10 0			1	2	0
1658	" " "	1	2	0
1659	Sockets, enlarging or reducing	0	1	0

N.B.—Prices of Votive Stands do not include Money and Candle Boxes.



Memorial Tablets.

No. 1356.



21-in. x 15-in.

Vine Border and Inscription deeply engraved and filled with imperishable red and black wax.

£10.

No. 651.

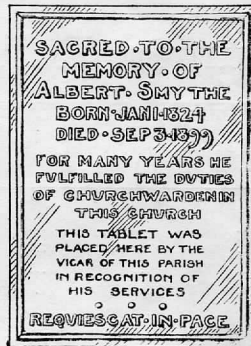


42-in. x 14-in.

In Latten Brass, with ornamental Border chiselled in Relief, and Inscription deeply engraved and filled with wax enamel.

£30.

No. 1357.

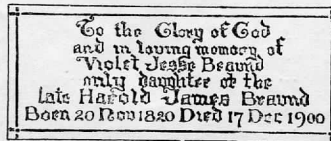


18-in. x 12-in.

Cast in imperishable Bronze, Letters and Borders in Relief.

£9.

No. 1359.

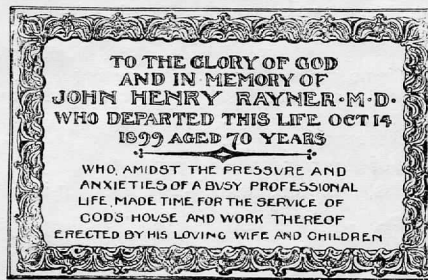


18-in. x 6½-in.

Brass, Letters and Border deeply engraved and filled with wax enamel, red and black.

£3.

No. 1360.

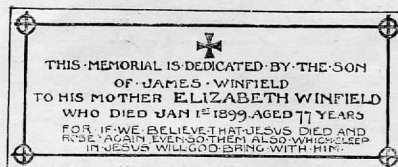


28-in. x 18-in.

In imperishable Bronze, Lily Border, modelled in Relief, with incised Inscription.

£12 12s.

No. 1362.

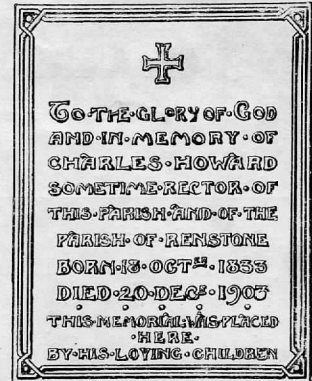


28-in. x 10-in.

In Brass, with Border and Inscription deeply engraved and filled with wax enamel.

£5.

No. 1358.

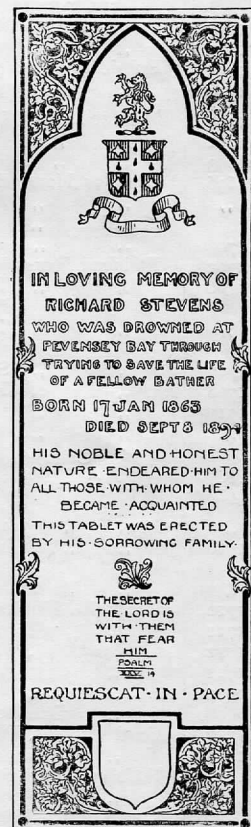


22-in. x 16-in.

In Repoussé Copper, Letters and Border in Relief.

£7

No. 1361.



42-in. x 14-in.

In Latten Brass, Border deeply engraved and filled with wax enamel. Crest and Inscription deeply engraved.

£20.

